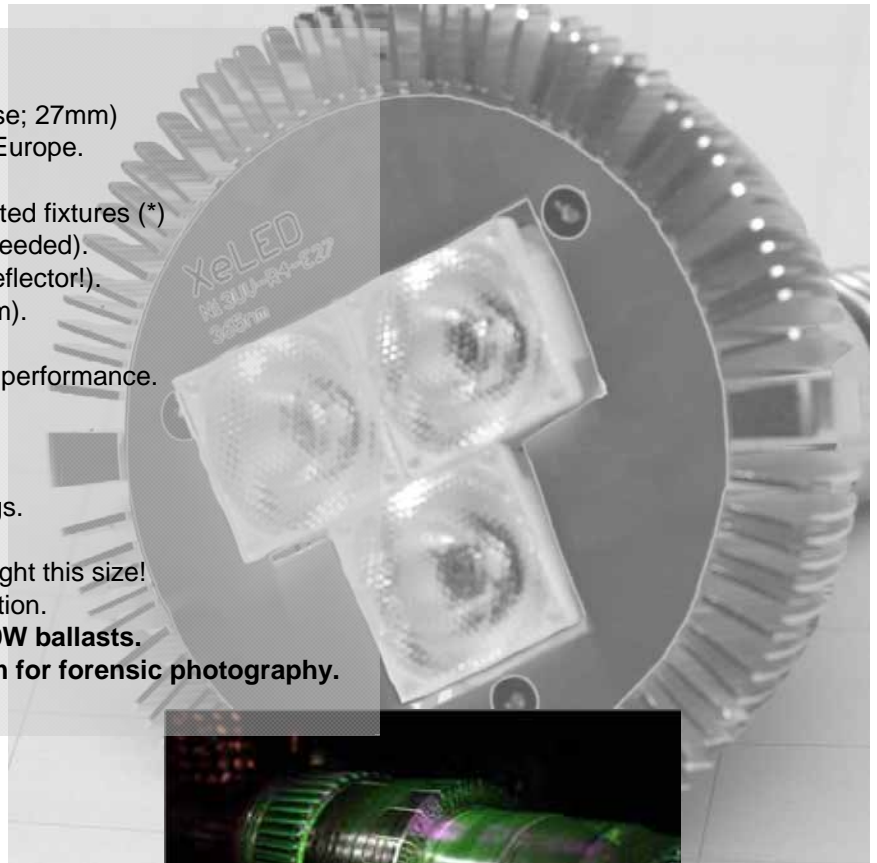




# High-flux 365nm Ultraviolet LED Inspection Light Bulb

## FEATURES:

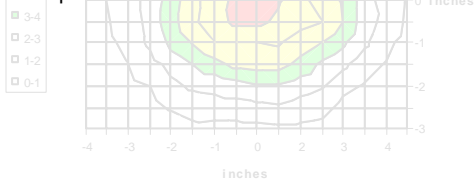
- *New!* Screw-in 365nm LED light source (E27 base; 27mm)
- Voltage range 90-265Vac — works in USA and Europe.
- Works in any light fixture!
- *Plus!* Screw-in replacement for mercury in ballasted fixtures (\*)
- True blacklight Alternate Light Source (no filter needed).
- Nichia high flux emitter with special lens (not a reflector!).
- Output power density  $>5000\mu\text{W}/\text{cm}^2$  at 15" (38cm).
- Beam diameter is 6" (at 15" working distance).
- Current-regulated drive circuit maximizes output performance.
- Air-cooled; no fan required.
- Only 5 inches long.
- LED Lifetime 10,000 hours.
- Beam angle 10 degrees with no hot-spots or rings.
- Output power 3x325mW at 365nm peak.
- Shows dust and contaminants unlike any other light this size!
- Unbeatable for currency and document examination.
- (\*) **Supported in fixtures with 75, 100, and 150W ballasts.**
- **NOTE: Available with *smooth* 30 degree beam for forensic photography.**
- **NOTE: Available 385nm, 3x400mW, to order.**



NDT inspection images from customers.



Yes! Works in ballasted fixtures as drop-in replacement.



## PART NUMBER

XeLED-Ni3UV-R4-365-E27-SS

XeLED-Ni3UV-R4-365-E27-M

## DESCRIPTION

3x365nm LED bulb for NDI/NDT (spot beam)

3x365nm LED bulb for Forensics (medium beam)

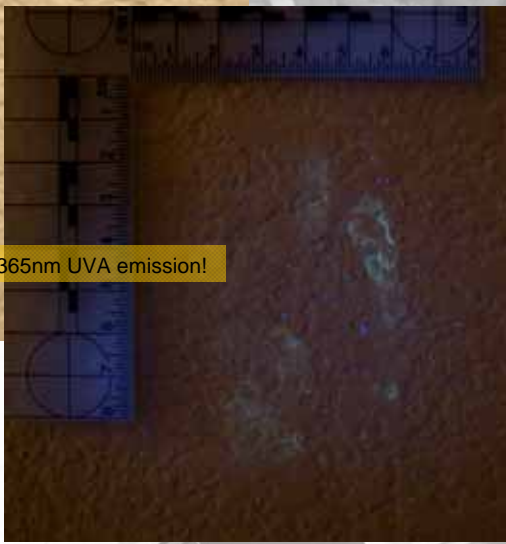
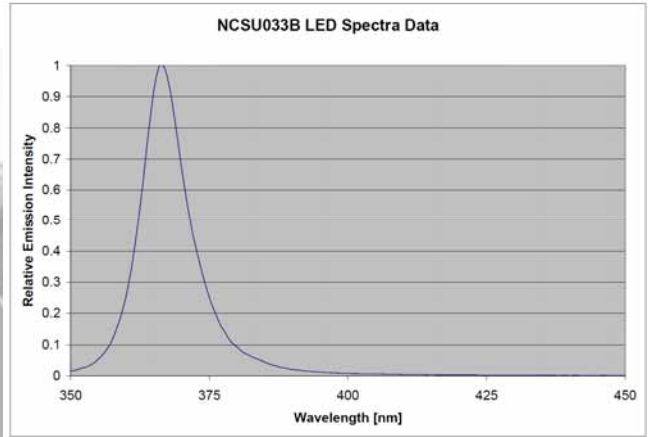
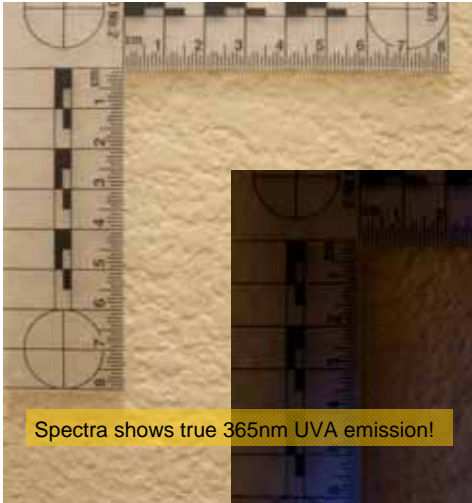
Xenopus Electronix  
[www.csiflashlights.com](http://www.csiflashlights.com)  
[sales@xenopuselectronix.com](mailto:sales@xenopuselectronix.com)

Assembled in Texas





# High-flux 365nm Ultraviolet LED Inspection Light Bulb



Handprint on wall—no filter for photograph.



Living gecko under normal illumination (above) and demonstrating skeletal fluorescence under 365nm illumination (below).



License security feature. In order: Normal light; competitor's "UV" light; competitor's "385nm UV light"; and finally the Ni1UV 365nm light. (Ni1UV light source at 12 inches from subject.). UV images at same exposure, no filter used.

Handprint on wall under normal light (upper) and 365nm+some ambient (lower). Handprint is not treated with any enhancing chemical; fluorescing substance likely organic in origin. The 365nm light can be used at a crime scene to localize where print lifting efforts could be exercised. Photograph taken with no filter. Removal of ambient light significantly enhances observed fluorescence.

Xenopus Electronix  
[www.csiflashlights.com](http://www.csiflashlights.com)  
[sales@xenopuselectronix.com](mailto:sales@xenopuselectronix.com)



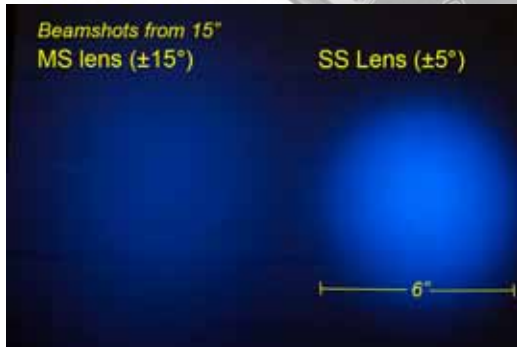
**CAUTION: Device emits intense UV radiation:  
 Do not look directly at beam.**



# High-flux 365nm Ultraviolet LED Inspection Light Bulb



Currency viewed under 365nm. Note stripe on



Lens comparison from Ni1UV flashlight, for reference



Security markings on drivers license



Diamond fluorescence under 365nm

## INSTRUCTIONS FOR USE:

- Screw in to standard light fixture.
- —OR— Screw in to ballasted light fixture to replace mercury vapor bulb.
- Turn off power when replacing bulb.
- Use caution to avoid direct exposure to eye.
- Yellow or clear (appropriate UV blocking eg. NoIR brand) glasses can be used.
- Not a toy — keep out of reach of children!

Xenopus Electronix  
www.csiflashlights.com  
sales@xenopuselectronix.com



**CAUTION: Device emits intense UV radiation:  
Do not look directly at beam.**