



365nm Regulated high-flux LED Rechargeable Lantern

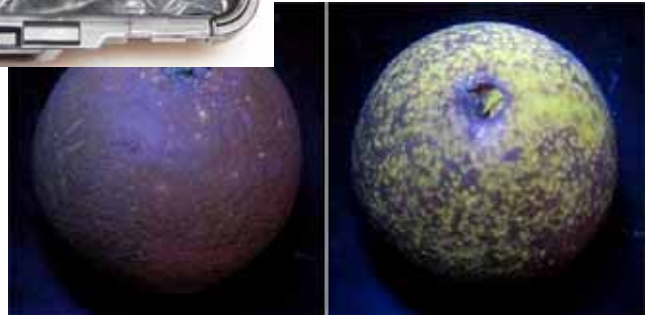


APPLICATIONS:

- Non-destructive inspection (NDI).
- Non-destructive testing (NDT).
- Laboratory.
- Scientific.
- Forensics.
- CSI — detect bone fragments amidst ground debris.

FEATURES:

- Reliable regulated solid-state 365nm emission from high-flux emitters.
- **Quartz lens** for >95% transmission at 365nm.
- Regulated circuitry maintains constant UV output until low battery indication.
- Rechargeable sealed lead acid battery.
- Features low battery indication by flashing to alert user to charge.
- Trigger switch locks for continuous operation.
- 8" long x 4.5" wide.
- LED Lifetime 10,000 hours.
- Runtime approaches 2 hours on full charge.
- Beam angle 10 degrees approximately.
- Optional external 120-250V smart charger available (EURO model).
- Choice of spot or medium lenses.



Freeze damaged Naval orange — mild (left), severe (right).
Photograph © Dr. Jim Thompson

PART NUMBER

XeLED-Ni3UV-R3-365-Q

XeLED-Ni3UV-R3-365-Q-K

DESCRIPTION

365nm Ultraviolet Rechargeable Lantern with high-flux LEDs and quartz lens. Kit includes plastic carrying case and yellow wraparound viewing glasses.

Xenopus Electronix
www.csiflashlights.com
sales@xenopuselectronix.com

(512) 917-4538 / FAX (512) 372-3483



365nm Regulated high-flux LED Rechargeable Lantern



APPLICATION SPECIFICS:

- Currency validation.
- Forensics.
- CSI — detect bone fragments amidst ground debris.
- Dye-penetrating magnetic inspection.
- UV-curing.
- Output power density $>3000\mu\text{W}/\text{cm}^2$ at 15 inches.
- *New!* Citrus Freeze detection (on the tree or before packing).



Living gecko under normal illumination (above) and demonstrating skeletal fluorescence under 365nm illumination (below)

INSTRUCTIONS FOR USE:

- This unit is supplied with a 3-stage universal 120-250V smart volt AC charger .
- Charge type 3 hours (for full charge).
- Red LED on charger indicates charging.
- Green LED on charger indicates charge is complete.
- (Red LED on back of lantern handle functions only for overnight charger).
- If unit is not used for two months, typically 1 hours of charging will be required.
- Do not operate the lantern during charging.
- Do not submerge in water — unit is splash-resistant, not waterproof.
- Do not unscrew head.
- Not a toy — keep out of reach of children!
- Yellow UV-blocking viewing goggles must be worn in UV mode.
- Appropriate clear UV-blocking goggles can be used, check for block at 400nm and below (eg: NOIR Laser Shield brand)
- Lead-acid battery is fully recyclable, and must be recycled in accordance with local and state guidelines.
- Quartz lens can shatter if dropped, use caution.



Universal 100-250VAC three-stage smart charging kit available — must be purchased with lantern so lantern can be equipped with charging port.

Arrowhead Forensics
www.crime-scene.com
(913) 894-8388



**CAUTION: Device emits ultraviolet radiation:
Avoid direct or strongly reflected exposure.
Do not look at beam.**

Assembled in USA

