

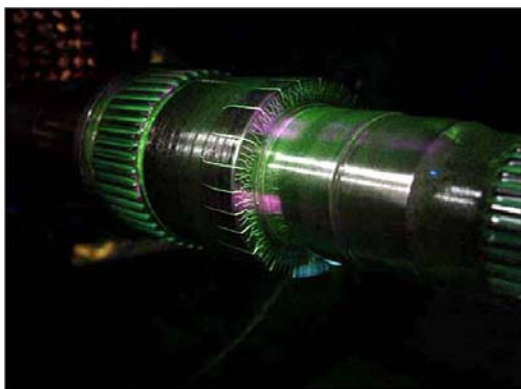


# High-flux 365nm Ultraviolet LED Inspection Light Bulb

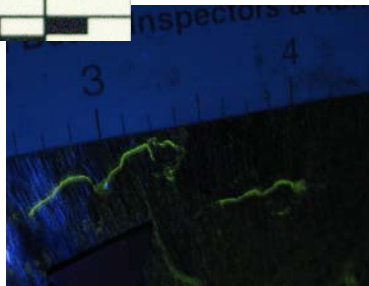


## FEATURES:

- *New!* Screw-in 365nm LED light source (E27 base; 27mm)
- Voltage range 90-265Vac — works in USA and Europe.
- Works in any light fixture!
- *Plus!* Screw-in replacement for mercury in ballasted fixtures (\*)
- True blacklight Alternate Light Source (no filter needed).
- Nichia high flux emitter with special lens (not a reflector!).
- Output power density >2250 $\mu$ W/cm<sup>2</sup> at 15" (38cm).
- Beam diameter is 6" (at 15" working distance).
- Current-regulated drive circuit maximizes output performance.
- Air-cooled; no fan required.
- Only 3 inches long.
- LED Lifetime 10,000 hours.
- Beam angle 10 degrees with no hot-spots or rings.
- Output power 325mW at 365nm peak.
- Shows dust and contaminants unlike any other light this size!
- Unbeatable for currency and document examination.
- (\*) **Supported in fixtures with 75, 100, and 150W ballasts.**
- **NOTE: Available with *smooth* 30 degree beam for forensic photography.**
- **NOTE: Available 385nm, 400mW, to order.**



NDT inspection images from customers.



Yes! Works in ballasted fixtures as drop-in replacement.



## PART NUMBER

XeLED-Ni1UV-R4-365-E27-SS

XeLED-Ni1UV-R4-365-E27-M

## DESCRIPTION

365nm LED bulb for NDI/NDT (spot beam)

365nm LED bulb for Forensics (medium beam)

Xenopus Electronix  
www.csiflashlights.com  
sales@xenopuselectronix.com

Assembled in Texas





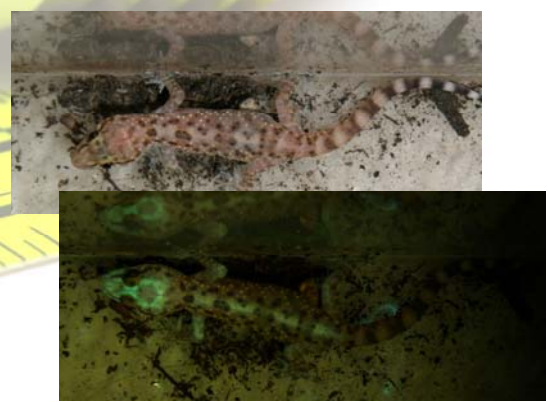
# High-flux 365nm Ultraviolet LED Inspection Light



Currency viewed under 365nm. Note stripe on \$100 bill shows up correctly red.

Security markings on drivers license

Handprint on wall under normal light (upper) and 365nm+some ambient (lower). Handprint is not treated with any enhancing chemical; fluorescing substance likely organic in origin. The 365nm light can be used at a crime scene to localize where print lifting efforts could be exercised. Photograph taken with no filter. Removal of ambient light significantly enhances observed fluorescence.



Living gecko under normal illumination (above) and demonstrating skeletal fluorescence under 365nm illumination (below).



License security feature. In order: Normal light; competitor's "UV" light; competitor's "385nm UV light"; and finally the Ni1UV 365nm light. (Ni1UV light source at 12 inches from subject.). UV images at same exposure, no filter used.



Diamond fluorescence under 365nm

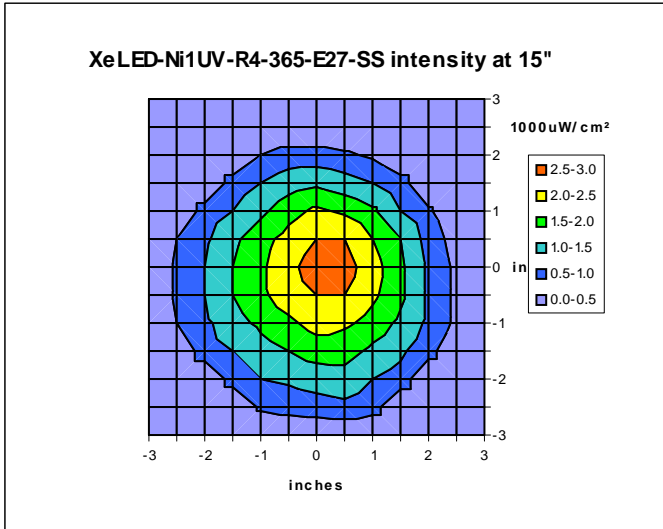
Xenopus Electronix  
[www.csiflashlights.com](http://www.csiflashlights.com)  
[sales@xenopuselectronix.com](mailto:sales@xenopuselectronix.com)



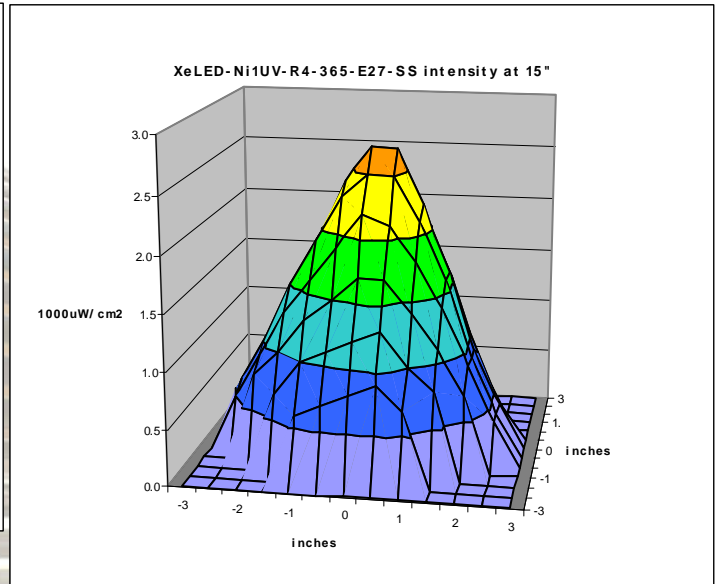
**CAUTION: Device emits intense UV radiation: Do not look directly at beam.**



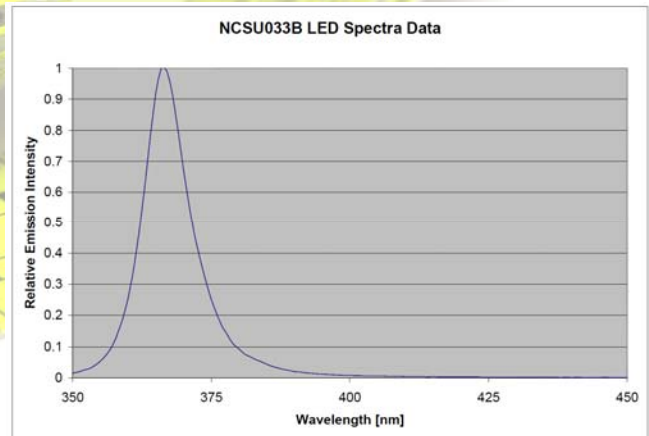
# High-flux 365nm Ultraviolet LED Inspection Light Bulb



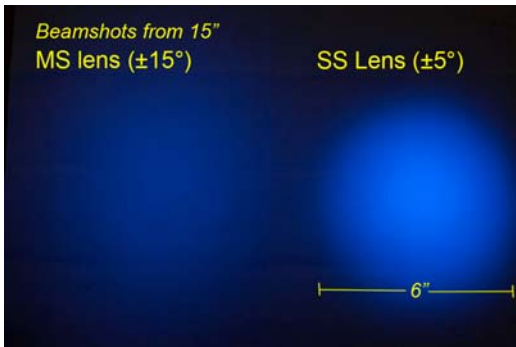
SS lens beam intensity graphs at 15"



Yes! Works in ballasted fixtures as drop-in replacement.



Spectra shows true 365nm UVA emission!



## INSTRUCTIONS FOR USE:

- Screw in to standard light fixture.
- —OR— Screw in to ballasted light fixture to replace mercury vapor bulb.
- Turn off power when replacing bulb.
- Use caution to avoid direct exposure to eye.
- Yellow or clear (appropriate UV blocking eg. NoIR brand) glasses can be used.
- Not a toy — keep out of reach of children!



**CAUTION: Device emits intense UV radiation: Do not look directly at beam.**

Xenopus Electronix  
[www.csiflashlights.com](http://www.csiflashlights.com)  
[sales@xenopuselectronix.com](mailto:sales@xenopuselectronix.com)